



Oak Tree Ward, ELCH
Design development

Existing site constraints/ opportunities



N
↑

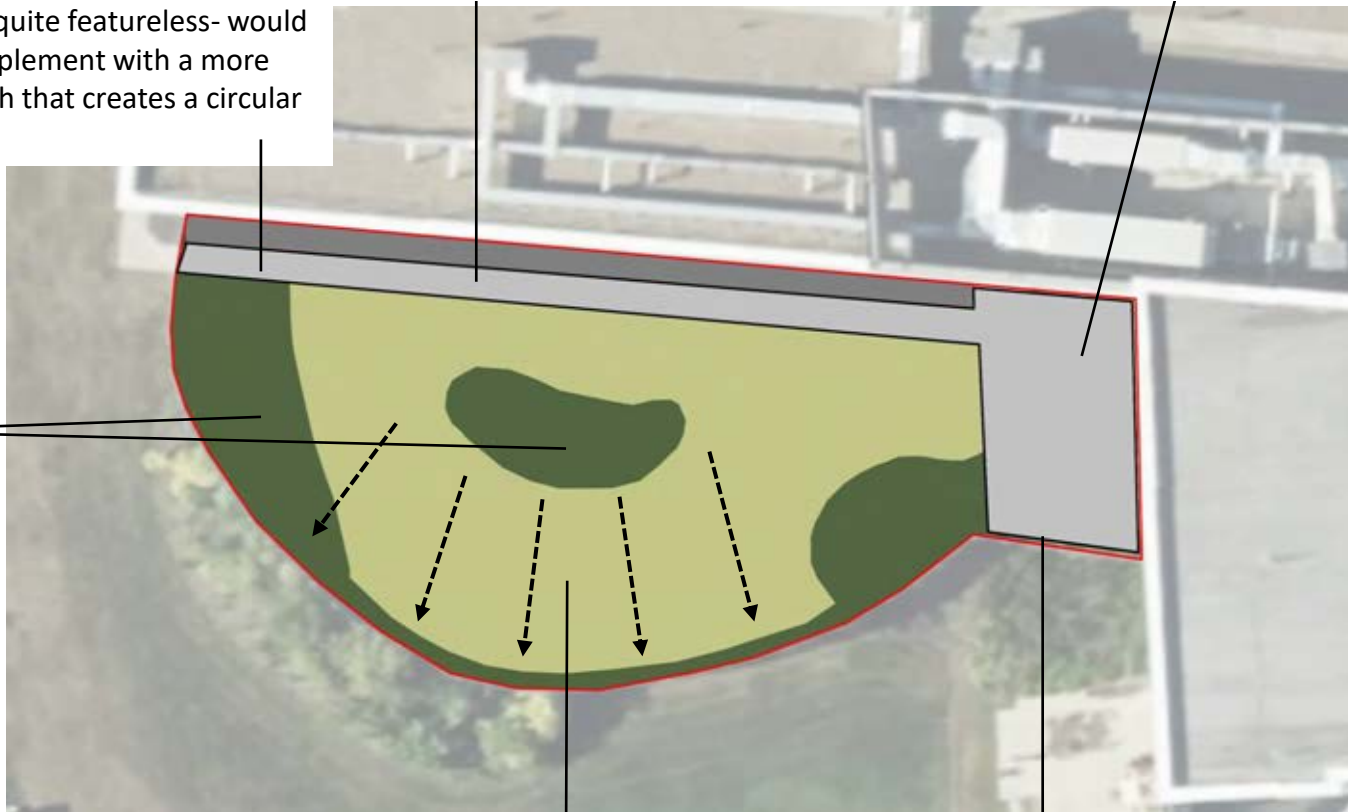
↑

Wide gravel strip and path, all south facing. Great opportunity for planting that can be seen from inside and for seating areas off path. Gravel strip is not too accessible, so planting would make good use of space

Large south facing terrace, great for flexible space, would benefit from some shelter from sun? Could be pergola/ parasols?

Straight path is quite featureless- would be great to complement with a more meandering path that creates a circular route

Planting would benefit from height and seasonal colour, with sensory species incorporated



Softening the fence here

Slope up to 2m height at fenceline
Great to showcase planting and trees, but consider location of any paths, retaining walls and level changes, which can add some cost.
Locating path in more level areas could be simpler

Existing site (Level changes)



- Significant level change across approx. 1/3 of the space, up to approx. 2m in height
- Paths/ access routes created in the space should be a maximum gradient of 1.20 to allow easy access (this would enable compliance with DDA)

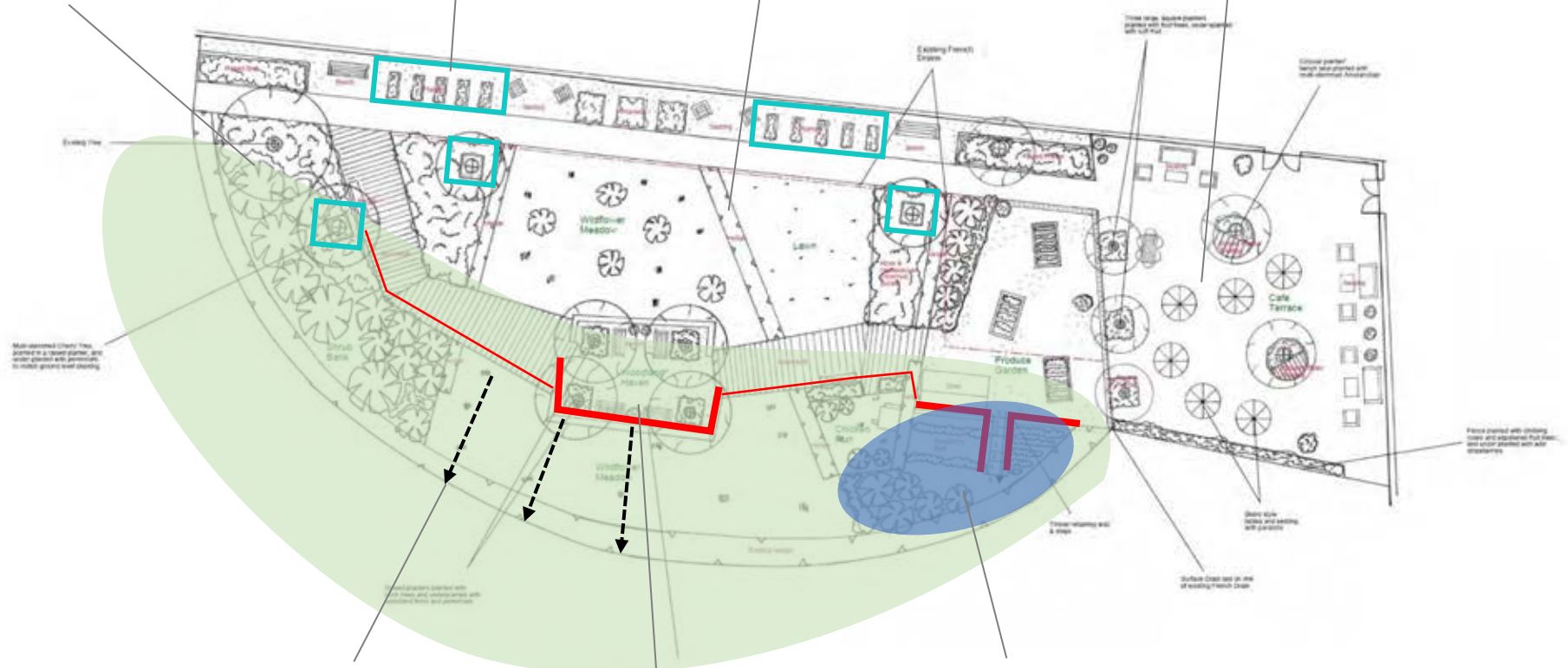
Previous proposal

This is a good space that become more of a woodland area- more secluded than the rest of the garden

Small raised planters require higher maintenance regime

Dividing hedges could require some maintenance, and go upwards across the sloped area

Café terrace area and growing spaces make good use of level ground



Multi-terraced Cherry Tree, planted in a square planter, with other plants with permeable to reduce ground level planting

Embankment – Level change up to 2m

Proposed seating area cutting into embankment – Retaining walls required

Proposed growing area accessible via steps – potentially could be difficult for less able

Order retaining wall and accompanying structural works

Order retaining wall & steps

Surface Drain (see on site of existing French Drain)

Shade from tables and seating will provide

Area covered with existing lawn and permeable paving to reduce ground level planting

Colour palette: lawn and paving with traditional landscaping

Three large square planters, planted with flowers, under water with soft fuel

Existing Perennial Garden

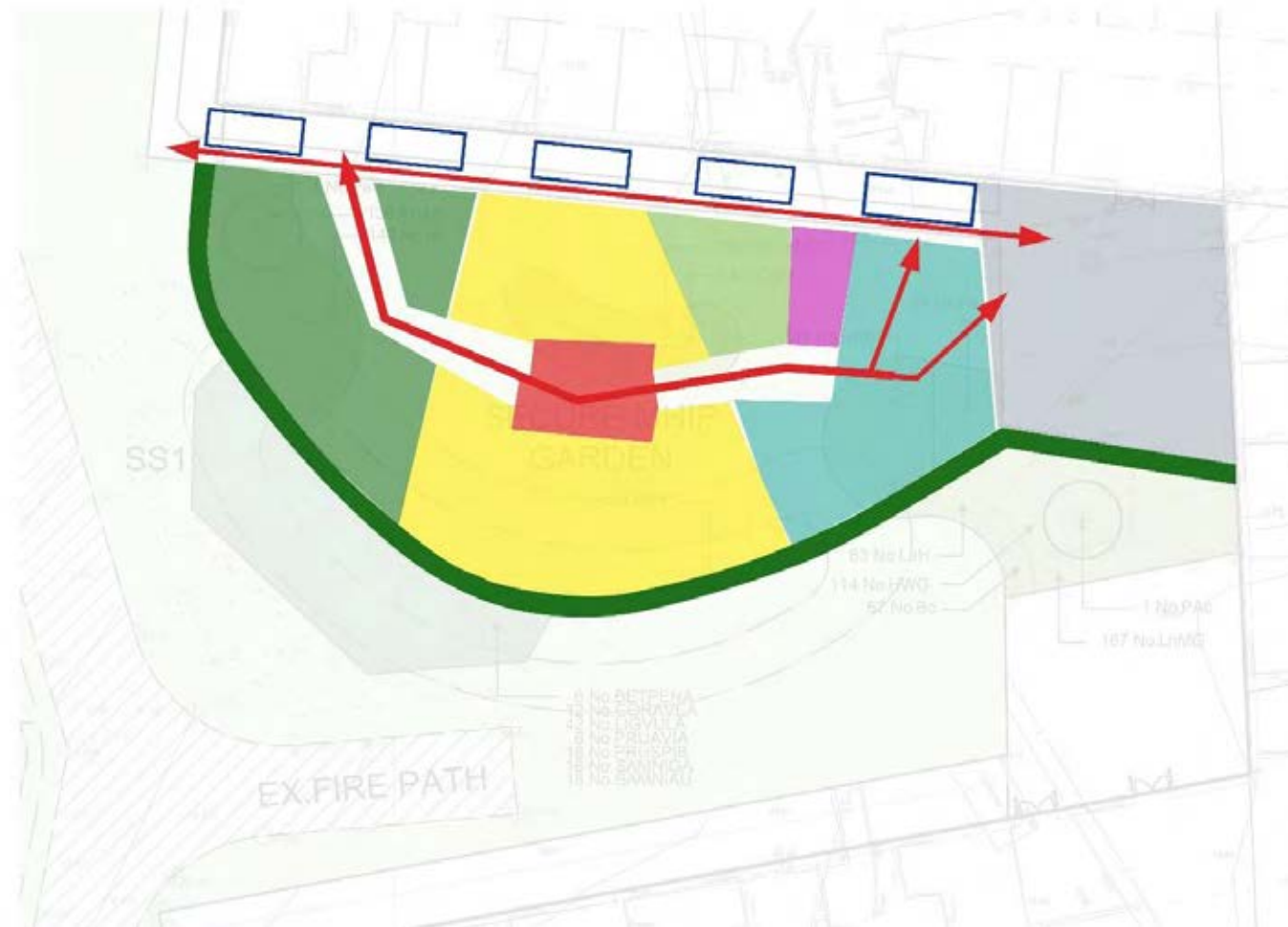
Woodflower Meadow

Lawn

Product Garden

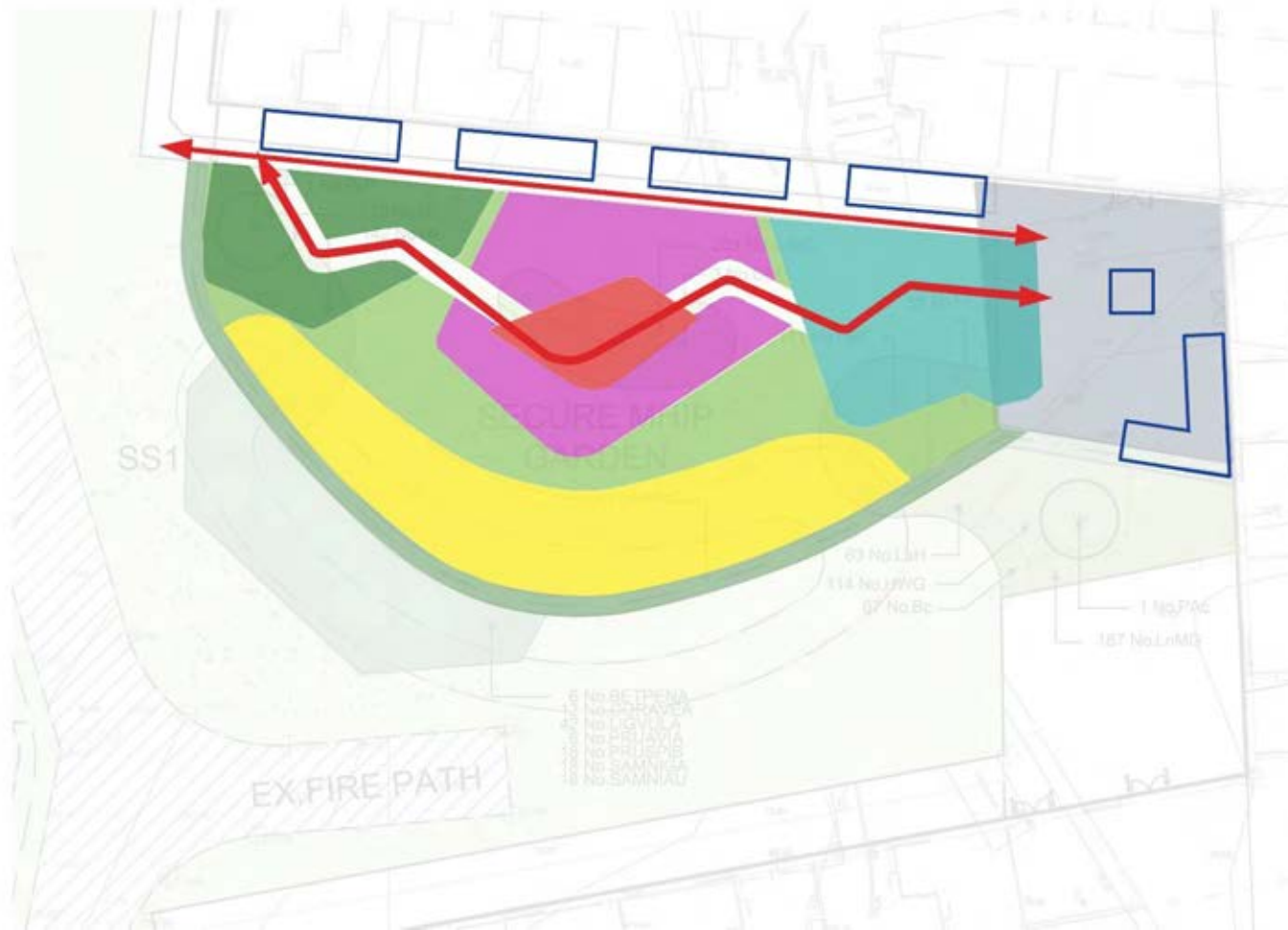
Café Terrace

Spaces in previous proposal



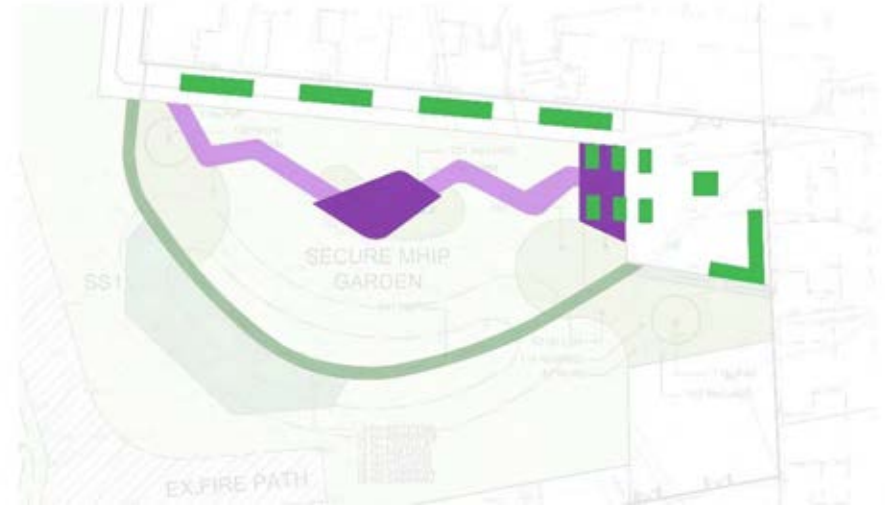
- Connecting routes
- Central seating zone
- Shrub/ Woodland area
- Wildflower meadow
- Lawn
- Perennial Border
- Produce garden
- Café terrace
- Raised planters
- Existing hedge

Proposed spaces








-  Connecting routes
-  Central seating zone
-  Shrub/ Woodland area
-  Wildflower meadow
-  Lawn
-  Perennial Border
-  Produce garden
-  Café terrace
-  Raised planters
-  Existing hedge




Hard landscape areas/ walls comparison



Previous layout

-  Surface formed from self binding gravel/ hoggin
-  Raised planters
-  Timber/ composite deck surface
-  Retaining walls
-  Key space surface (hoggin/ self binding gravel)

Proposed layout

-  Surface formed from self binding gravel/ hoggin
-  Raised planters
-  Key space surface (hoggin/ self binding gravel)

Hard landscape areas/ walls comparison



Hard landscape area: 148 m²

Retaining walls: 69 m

Steps: 6

Raised planters: 30

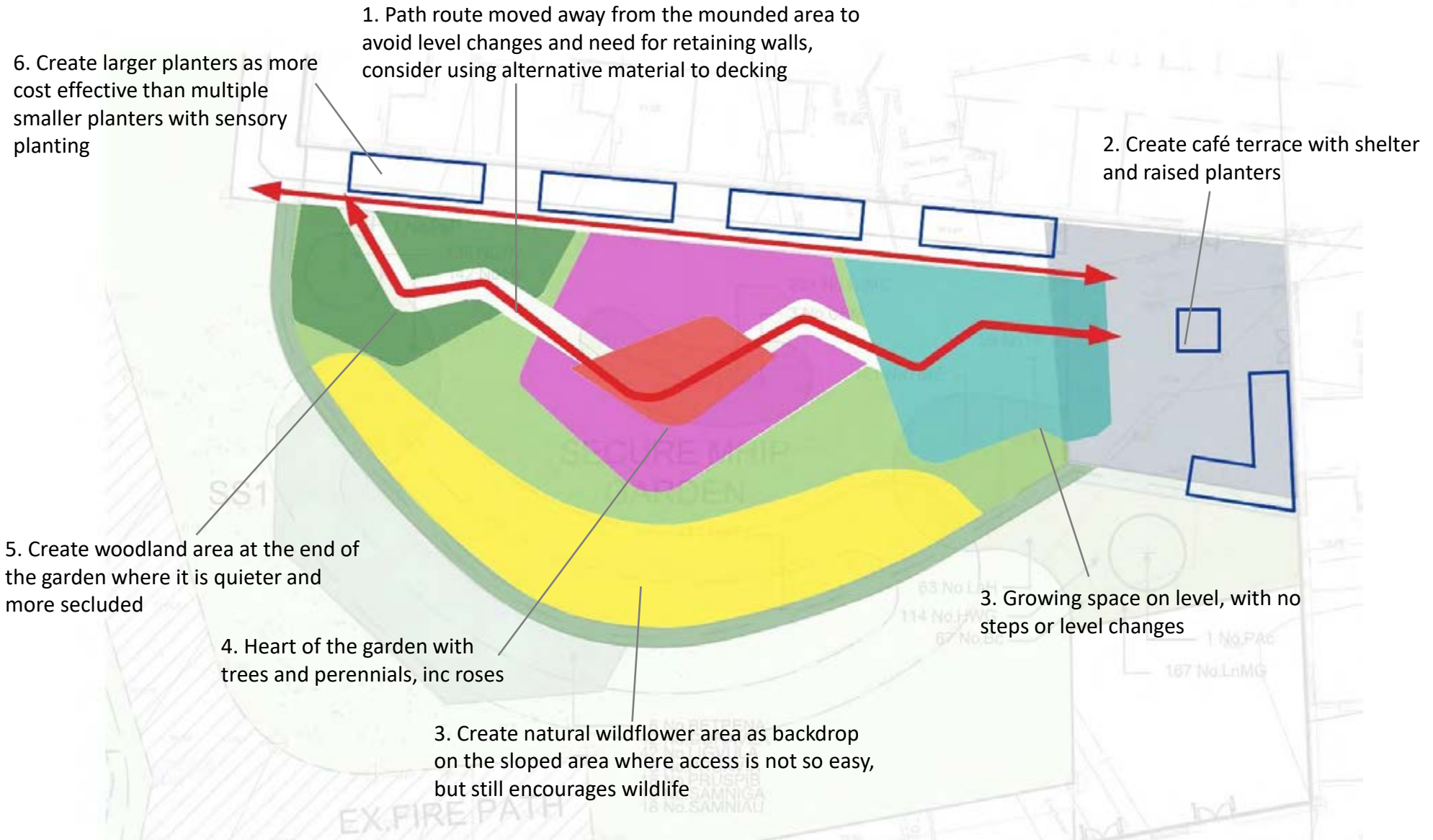
Hard landscape area: 112 m²

Retaining walls: None

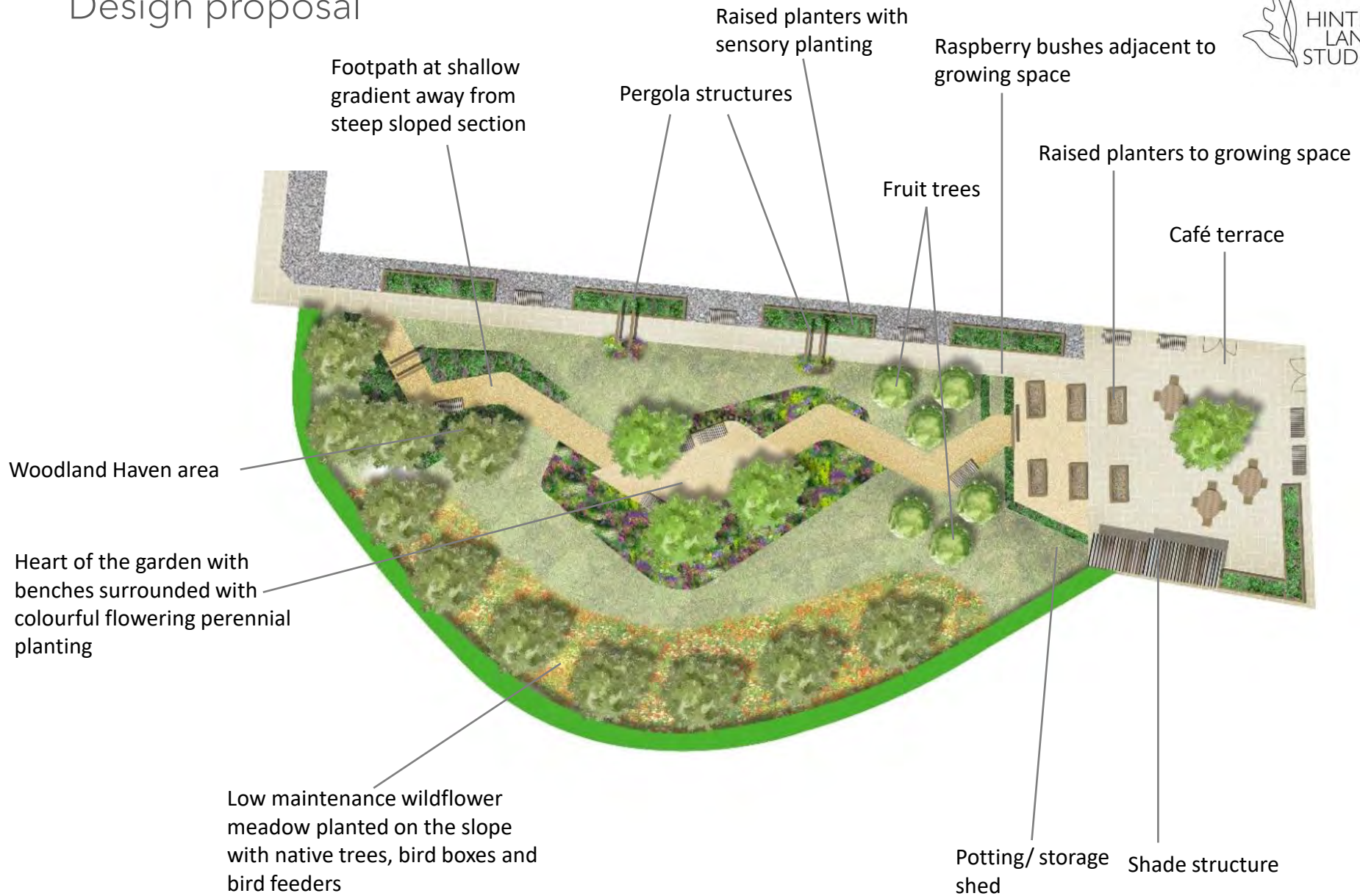
Steps: None

Raised planters: 12

Key moves



Design proposal



Precedent images



Previous proposal



Current proposal



Previous proposal



Current proposal



Views



Views



Trees and structure planting



Sensory planting (Scent, touch, sound, colour)



Sensory planting (Scent, touch, sound, colour)



Calming planting to shaded areas





Ward 1, ELCH
Sketch design for consultation

The existing site



Existing native buffer planting reflects the boundary for the Ward I garden. This could be extended to further define the train and create enclosure for Ward I

Reasons for pedestrian use through grounds can often mean the ward backs opens from outside

Areas for pedestrian use
 Areas of water table area
 Existing wildflower planted areas
 Hard landscape areas

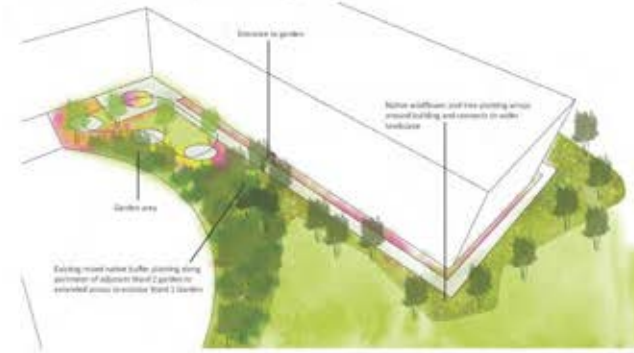
Views into the garden area/Ward I



There are views towards and into the ward, which can affect having an perception of privacy. This needs to be balanced with ability to see out of the ward area. A series of stepping paths without fully blocking off views should be developed

Views into the building
 Views out from the building

Sketch for how the garden could wrap around the building



Between to garden
 Garden area
 Existing mixed native buffer planting along perimeter of adjacent Ward I garden to extended across to create Ward I garden
 Native wildflower and tree planting areas around building and connects to water landscape

Model to show wildflower meadow, trees and gravel garden wrap around building



Planting to gravel margins creates a long border that can be seen from inside
 Native wildflower and tree planting areas around building and connects to water landscape

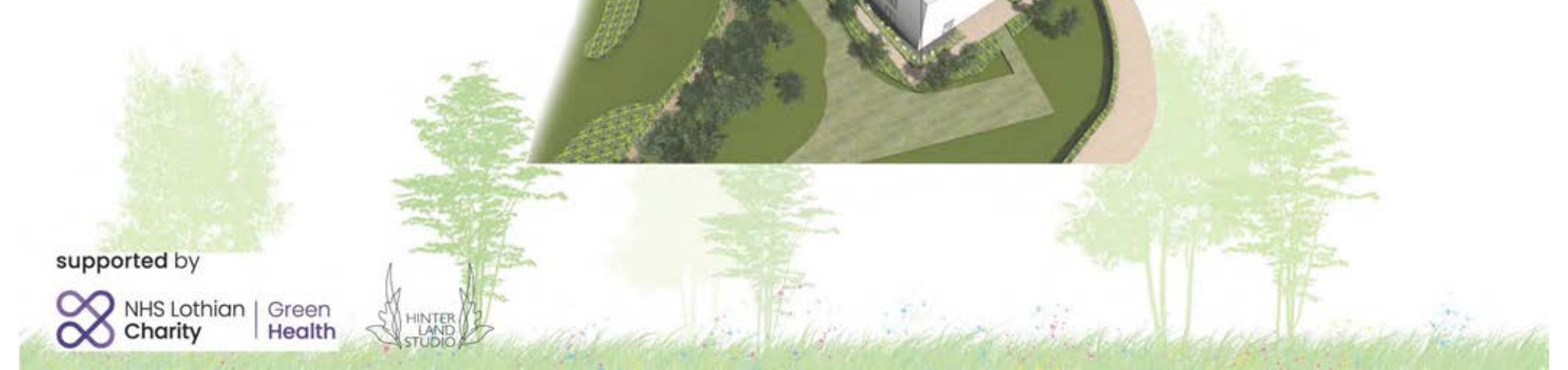
Wildflower meadow with native trees for wildlife



Gravel garden



supported by



Key elements to include/ consider in the Garden

- 1. Privacy**
Currently the area is very open, lots of people come up and see into windows. A fence of some other sort of enclosure would help create that private space closer to the terrace area.
- 2. This should be very visual garden with a range of colourful planting.**
Height of planting and planters to be considered from beds and wheelchairs. Wildflower meadows, with easy maintenance will bring colour and seasonal interest. Strongly scented plants should be avoided as many patients nauseous.
- 3. Spaces for patients, family and their pets**
Could be for either smaller groups, solo visitors, different people to use different areas. Pets, dogs allowed, so would be dog friendly space.
- 4. Would be great to encourage wildlife, with bird feeders, tables etc.**
- 4. Memorial Garden** to be considered for families would like to plant trees.
- 5. Fairy lights,** and other lighting generally to create a cosy atmosphere at dusk/ evening. (this could be good quality solar lighting)
- 6. Shelter from the sun** (pergola, parasol or other)
- 7. Patients' families bring plant pots** so they can be seen from inside, there could be space amongst any planters next to windows, or could provide simple platform so they can be placed at correct height.
- 8. Maintenance** would be carried out through volunteers, so design should consider how easy the garden is to maintain.



supported by



View looking over terrace area



View looking over terrace area



View looking over the garden



View over path looking to existing path



View with pergola cluster and terrace

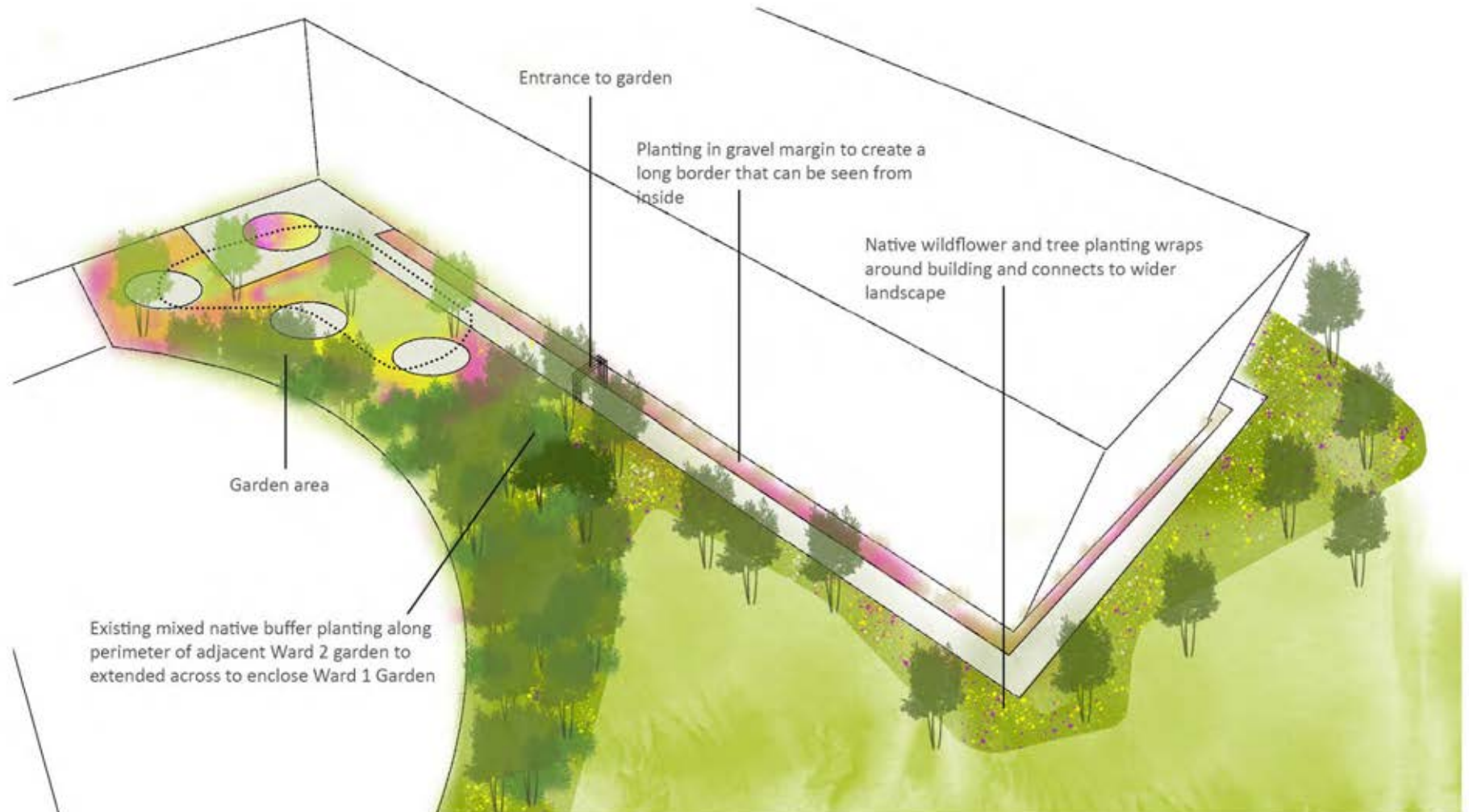


View towards terrace with pergola cluster and circular seat

supported by



Extending the garden around the building



Extending the garden around the building



The Garden



Fence with gate to enclose space

Circular bench seat

Pergola structure

Mixed native shrub planting, wildflower planting, bird boxes and bird feeders

Terrace area

Colourful perennial planting close to terrace, main path and can be seen from inside

Raised planters with planting into gravel between

Precedents



Precedents



Graphics and colour at ELCH



Warm



Active

Cool



Passive

Views





